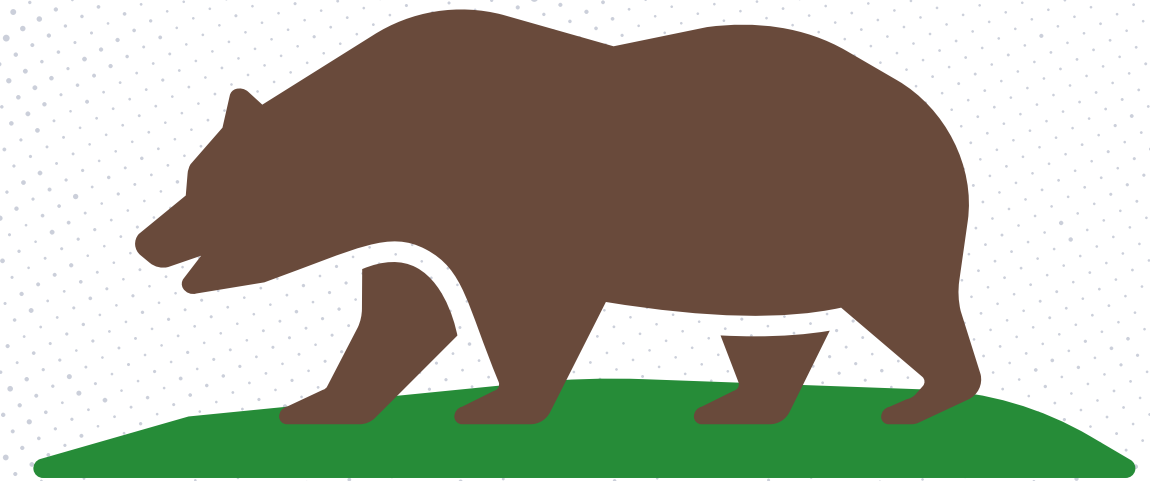


 **45TH** in percentage of taxable income spent on education

**NATIONAL
AVERAGE**
3.3%

CALIFORNIA
2.7%

**CALIFORNIA'S
RANK TIED FOR**
45TH



CALIFORNIA REPUBLIC

Percent of total taxable income spent on education | Source: Ed Week (2014)

WWW.FULLANDFAIRFUNDING.ORG

41ST

IN PER-PUPIL FUNDING

\$12,252

\$10,291

Per-pupil funding

\$1,961 FUNDING GAP

Source: California Budget & Policy Center
through 2015-16

■ National Average ■ California

45TH

IN PUPIL-TEACHER RATIOS

22.1

15.4

Pupils per teacher

**135,041 TEACHERS NEEDED
TO CLOSE THE GAP**

Source: NEA (2015-16)

■ National Average ■ California

48TH

IN PUPIL-STAFF RATIO

11

8

All staff: students per staff member

**213,711 STAFF NEEDED
TO CLOSE THE GAP**

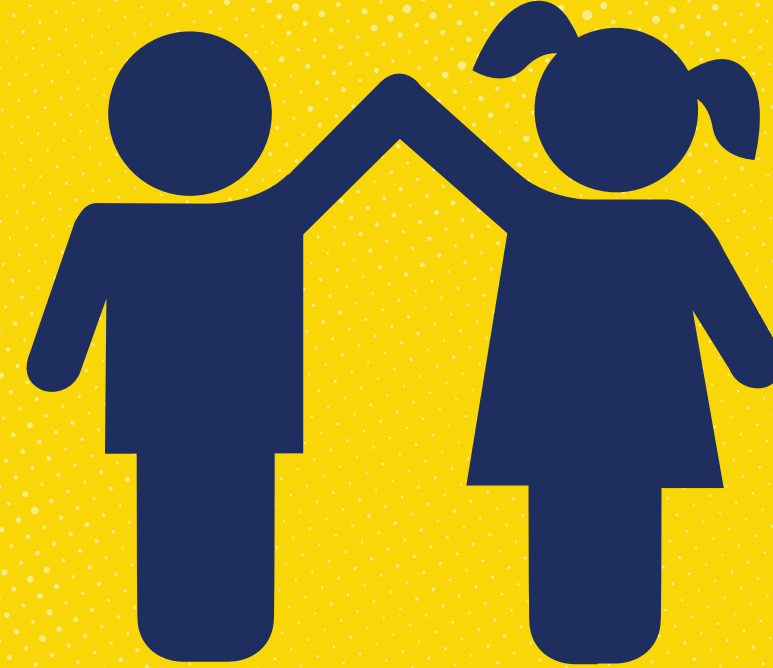
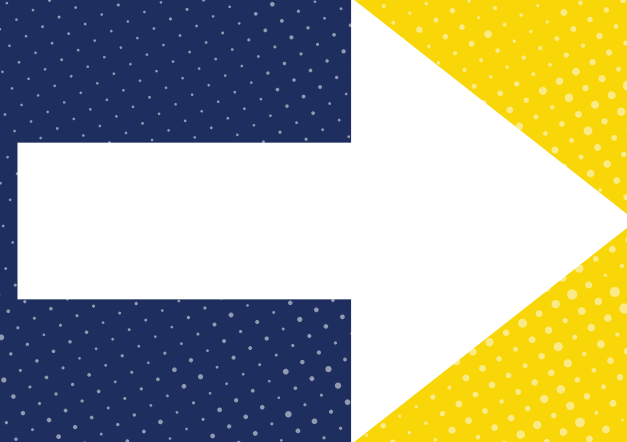
Source: NCES (2014-2015)

■ National Average ■ California



If the state funded schools at
just the national average, that
would increase funding by

\$1,961 per pupil



For a classroom of 25 students,
that's an additional

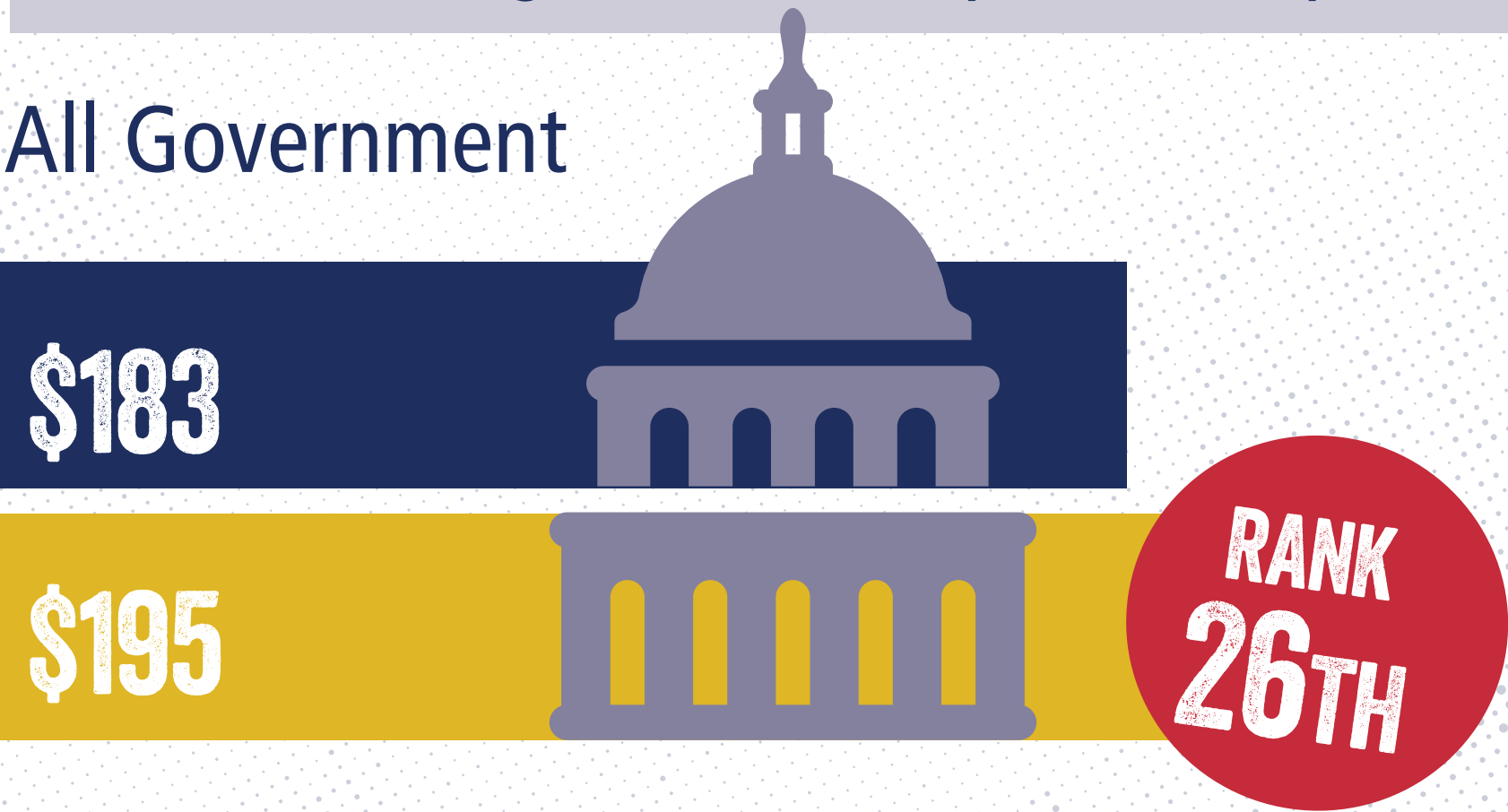
\$49,025

for student support services

HIGH SPENDING ON GOVERNMENT, LOW SPENDING ON SCHOOLS

State and local government expenditures per \$1,000 personal income

All Government



K-12 Education



■ National Average
■ California

Source: NEA (2014)